

AMPEG SALES CATALOG



AMPEG COMPANY, P.O. BOX 310, ELKHART, INDIANA 46514
A DIVISION OF THE MAGNAVOX COMPANY



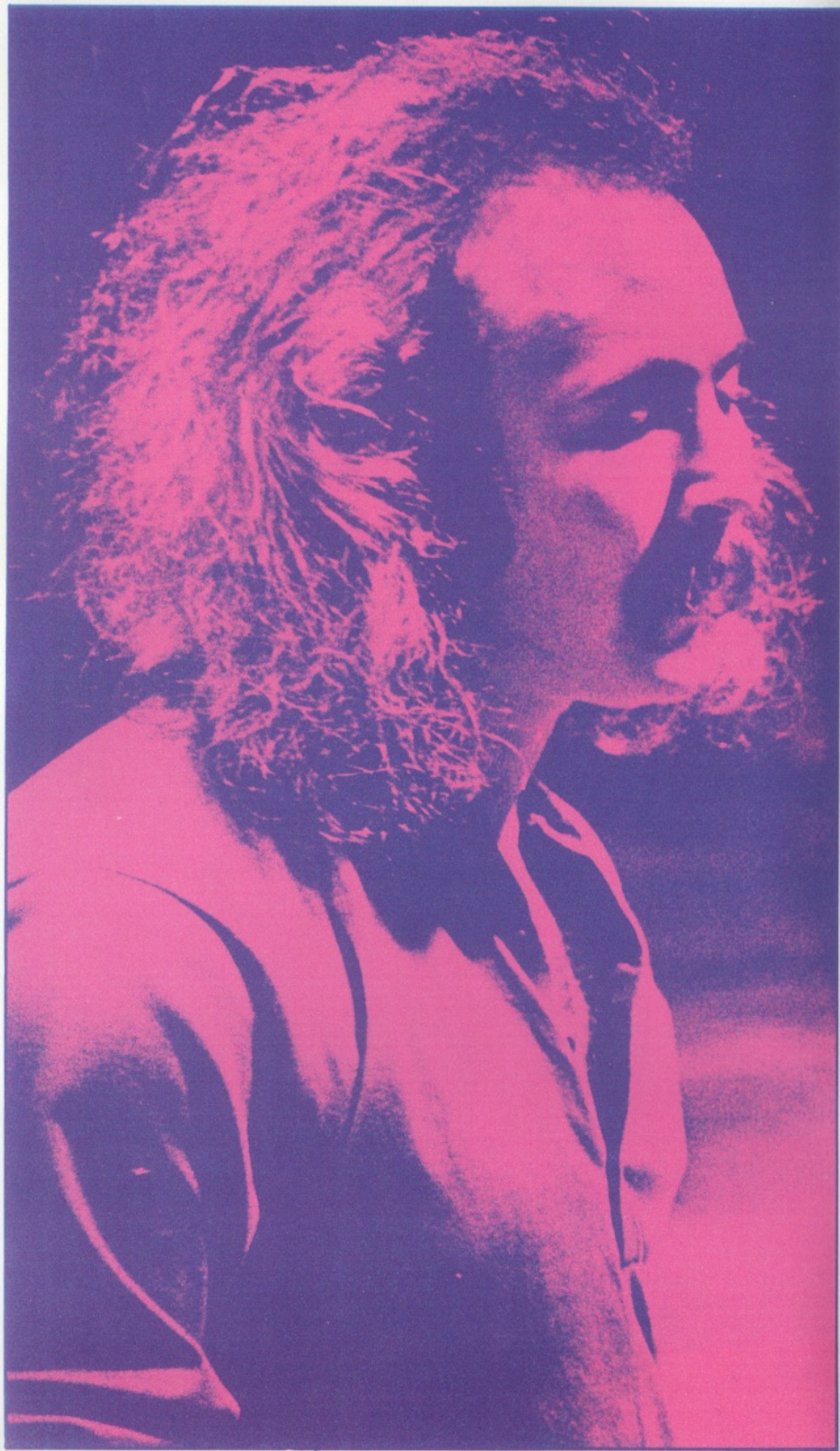
SVT

300 WATTS RMS

700 WATTS PEAK MUSIC POWER

SIXTEEN 10" SPEAKERS IN TWO
SEPARATE ENCLOSURES SEALED IN EIGHT
SEPARATE COMPARTMENTS



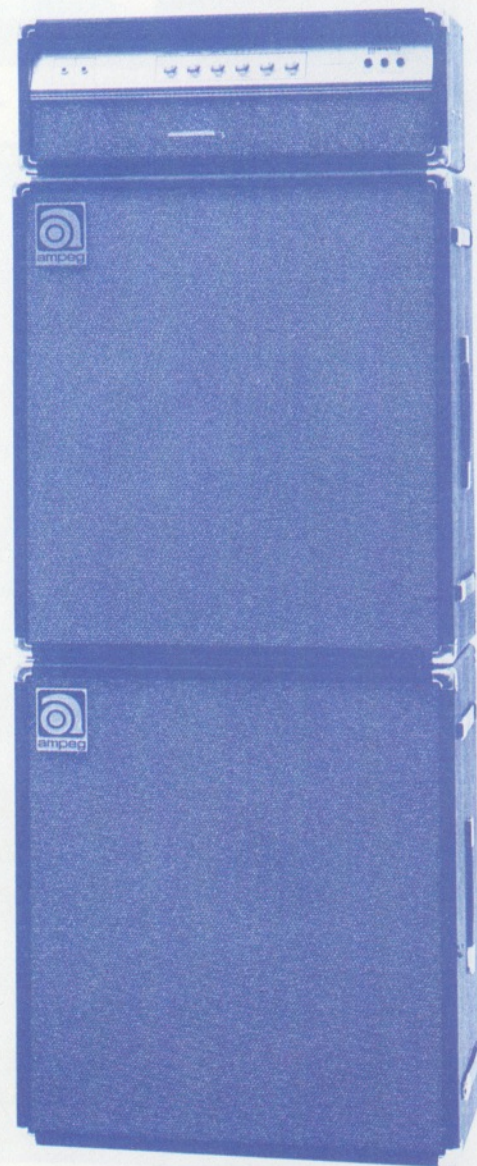


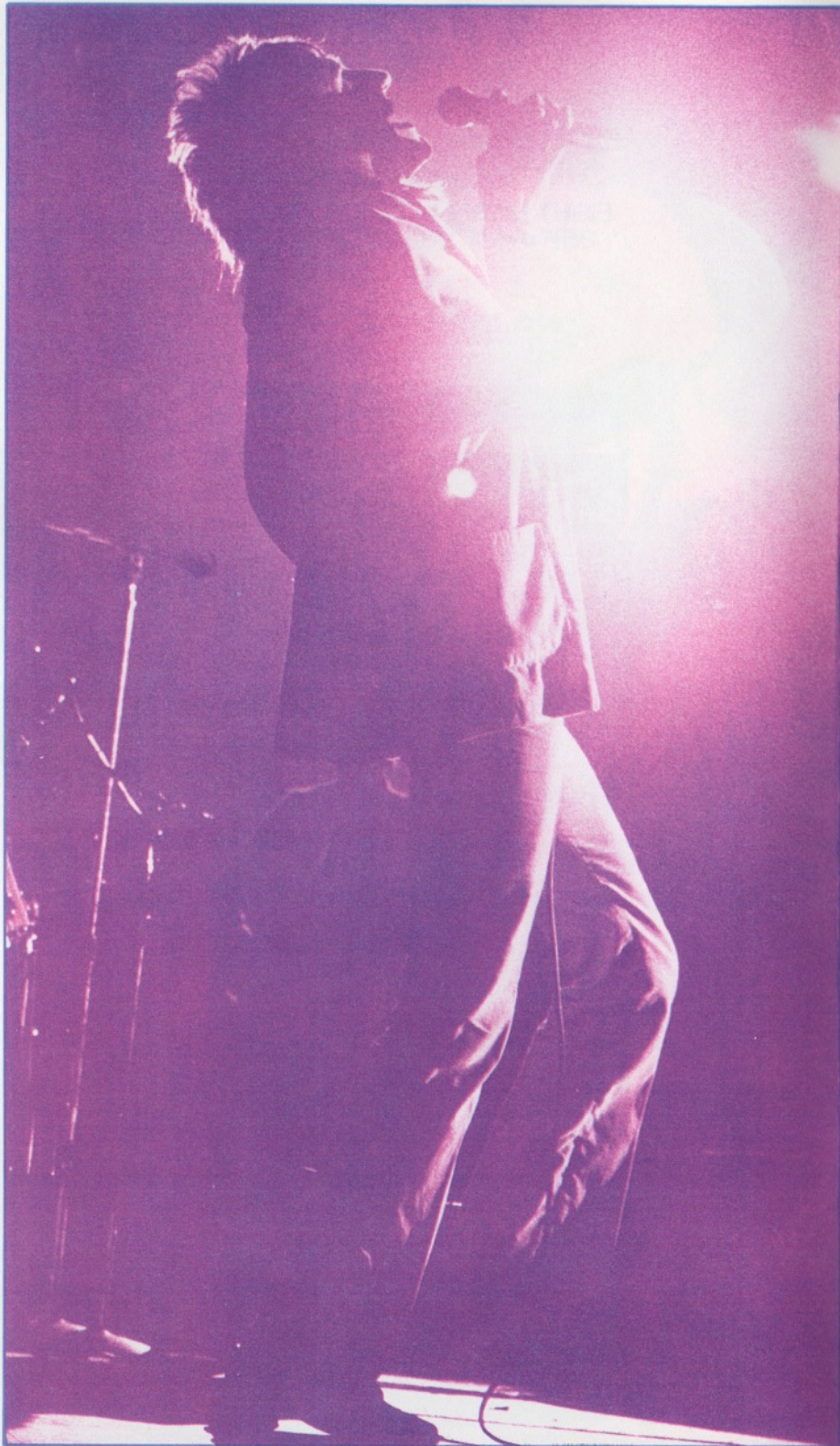
V-4

100 WATTS RMS

260 WATTS PEAK MUSIC POWER

FOUR
EIGHT 12" SPEAKERS IN TWO
SEPARATE ENCLOSURES



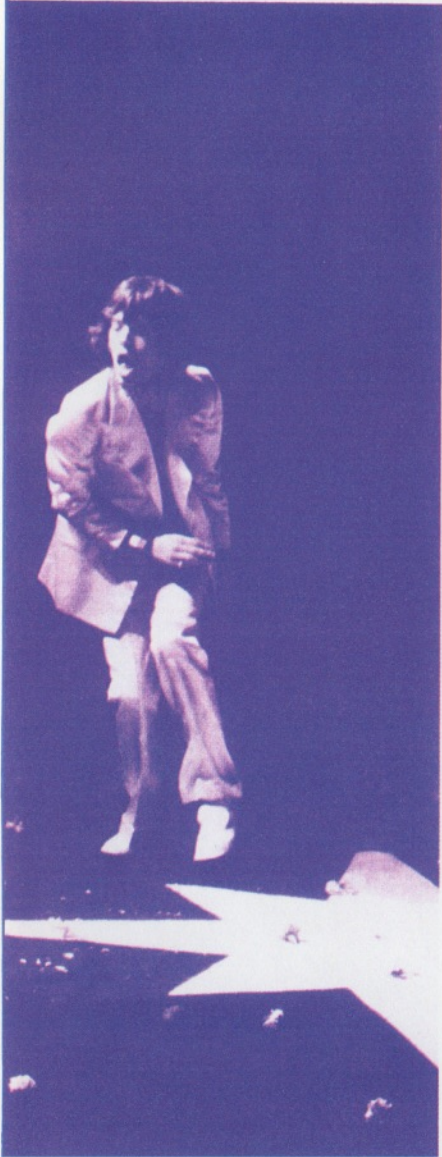


V-2

60 WATTS RMS
138 WATTS PEAK MUSIC POWER
FOUR 12" SPEAKERS IN ONE ENCLOSURE



100 WATTS RMS
260 WATTS PEAK MUSIC POWER
FOUR 12" SPEAKERS



VT-22

100 WATTS RMS
260 WATTS PEAK MUSIC POWER
TWO 12" SPEAKERS





GV-22

35 WATTS RMS

88 WATTS PEAK MUSIC POWER

TWO 12" SPEAKERS

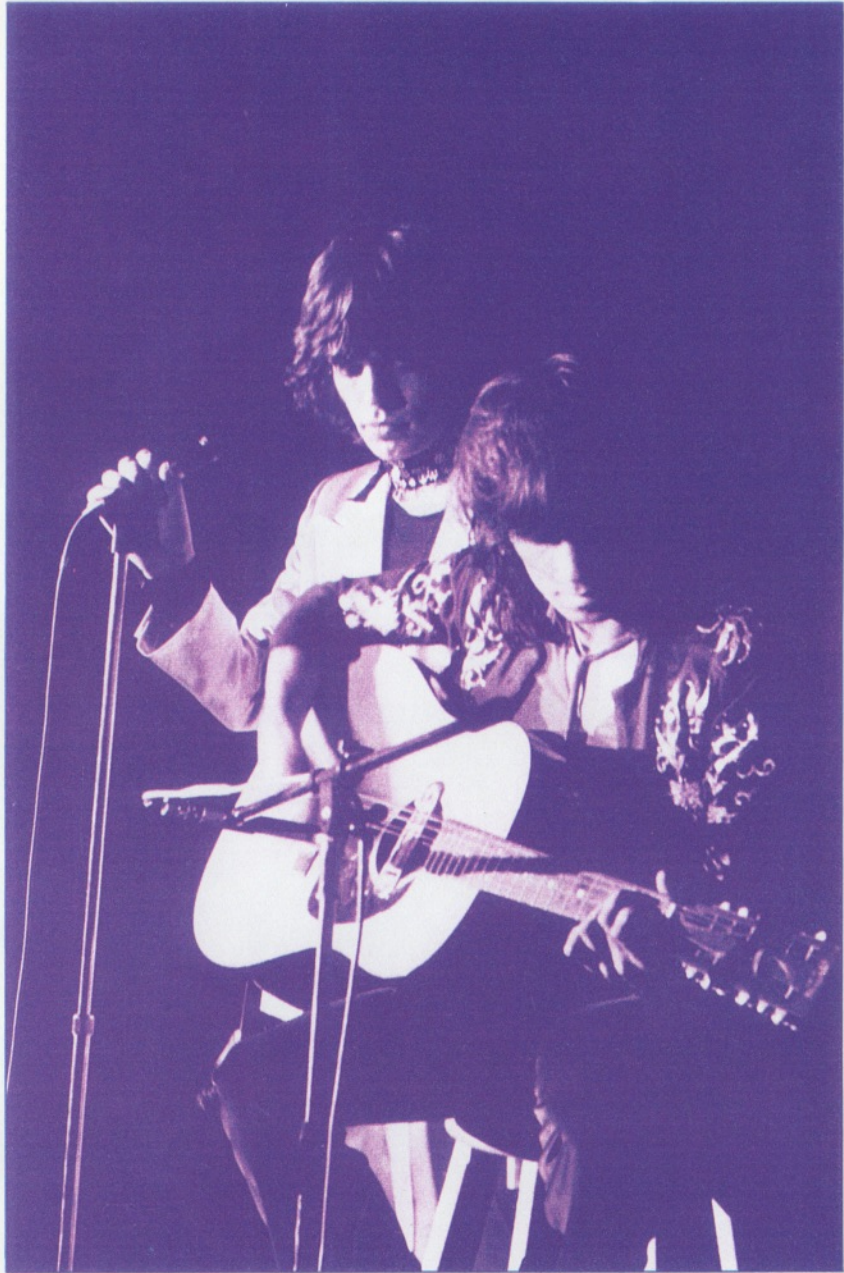




VT-40

60 WATTS RMS
138 WATTS PEAK MUSIC POWER
FOUR 10" SPEAKERS





G-12

22 WATTS RMS
44 WATTS PEAK MUSIC POWER
ONE 12" SPEAKER

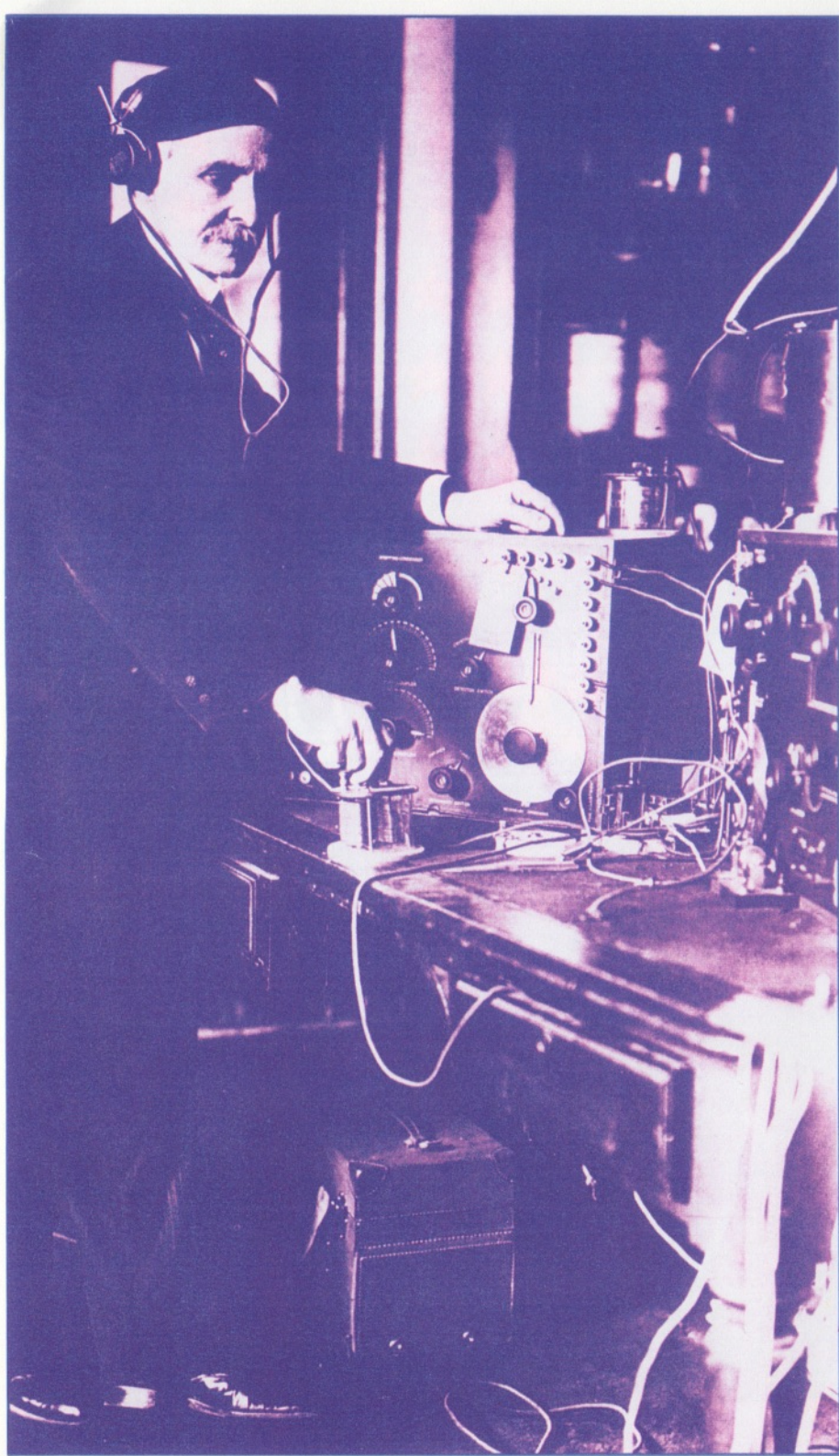




GU-12

20 WATTS RMS
40 WATTS PEAK MUSIC POWER
ONE 12" SPEAKER





GT-10

15 WATTS RMS
39 WATTS PEAK MUSIC POWER
ONE 10" SPEAKER





SBT

240 WATTS RMS

600 WATTS PEAK MUSIC POWER

FOUR 15" ALTEC-LANSING 421-A SPEAKERS
IN TWO POWERED ENCLOSURES





V-4B

100 WATTS RMS
260 WATTS PEAK MUSIC POWER
TWO 15" ALTEC LANSING 421-A SPEAKERS
SEALED IN A DUAL DRIVER FOLDED HORN
COMPARTMENT IN ONE ENCLOSURE





B-25B

55 WATTS RMS
120 WATTS PEAK MUSIC POWER
TWO 15" HEAVY DUTY SPEAKERS

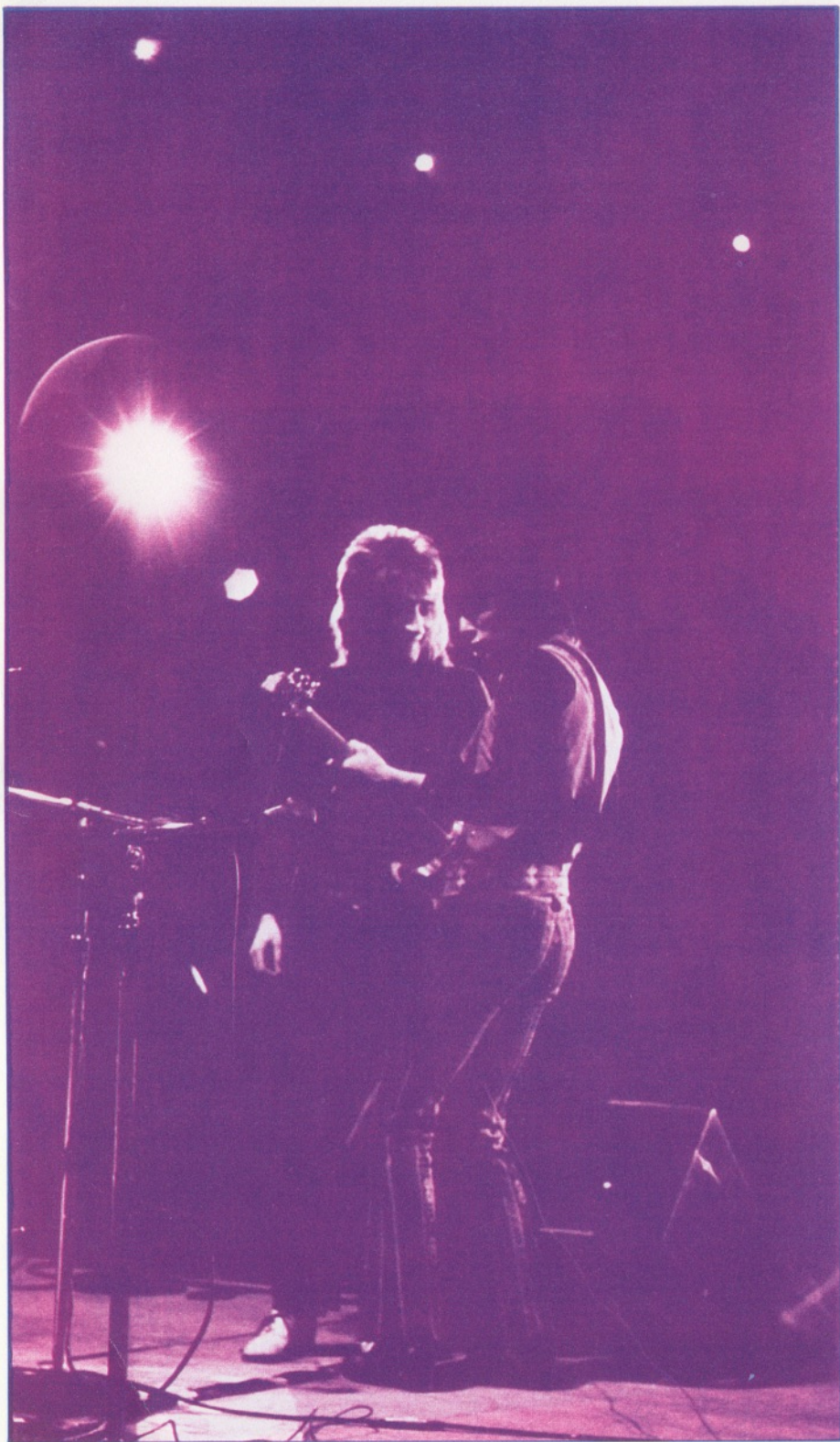




B-15S

60 WATTS RMS
138 WATTS PEAK MUSIC POWER
ONE 15" HEAVY DUTY SPEAKER





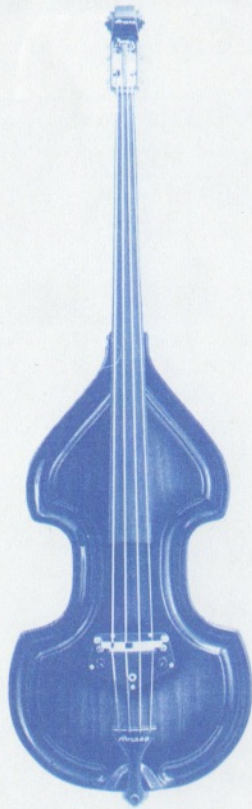
B-15N

30 WATTS RMS
70 WATTS PEAK MUSIC POWER
ONE 15" HEAVY DUTY SPEAKER



AMPEG ELECTRONIC BASS

MORE VERSATILE THAN THE ACOUSTIC BASS
COMPACT SIZE
FULL, RICH, VIBRANT SOUNDS OF THE DOUBLE BASS
5 STRING MODEL AVAILABLE



	SVT	V-4	V-2	VT-22	GV-22	VT-40	G-12	GU-12	GT-10	SBT	V-4B	B-25B	B-15S	B-15N
Amplifier Type	Tube	Tube	Tube	Tube	Tube	Tube	Tube	Tube	Solid State	Solid State	Tube	Tube	Tube	Tube
RMS Power	300	100	60	100	35	60	22	20	15	240	100	55	60	30
Peak Music Power	700	260	138	260	88	138	44	40	39	600	260	120	138	70
Speakers	16" 10"	8" 12"	4" 12"	2" 12"	2" 12"	4" 10"	1" 12"	1" 12"	1" 10"	4" 15" Altec	2" 15" Altec	2" 15"	1" 15"	1" 15"
Channels	4	2	2	2	4	2	4	2	2	4	2	4	4	4
Volume Control	•	•	•	•	•	•	•	•	•	•	•	•	•	•
Treble Control	•	•	•	•	•	•	•	•	•	•	•	•	•	•
Midrange Control	•	•	•	•	•	•	•	•	•	•	•	•	•	•
Bass Control	•	•	•	•	•	•	•	•	•	•	•	•	•	•
Input Sensitivity	•	•	•	•	•	•	•	•	•	•	•	•	•	•
Ultra Hi	•	•	•	•	•	•	•	•	•	•	•	•	•	•
Midrange Select	•	•	•	•	•	•	•	•	•	•	•	•	*	•
Ultra Lo	•	•	•	•	•	•	•	•	•	•	•	•	•	•
Reverb	•	•	•	•	•	•	•	•	•	•	•	•	•	•
Tremolo	•	•	•	•	•	•	•	•	•	•	•	•	•	•
Vibrato	•	•	•	•	•	•	•	•	•	•	•	•	•	•
Standby Switch	•	•	•	•	•	•	•	•	•	•	•	•	•	•
Polarity Switch	•	•	•	•	•	•	•	•	•	•	•	•	•	•
Footswitch Jack	•	•	•	•	•	•	•	•	•	•	•	•	•	•
Extension Speaker Jack	•	•	•	•	•	•	•	•	•	•	•	•	•	•
Imp. Matching Switch	•	•	•	•	•	•	•	•	•	•	•	•	•	•
Extension Amp. Jack	•	•	•	•	•	•	•	•	•	•	•	•	•	•
Dolly Included	•	•	•	•	•	•	•	•	•	•	•	•	•	•
Altec Lansing Speakers Optional	•	•	•	•	•	•	•	•	•	•	•	•	•	•
Cover Optional	•	•	•	•	•	•	•	•	•	•	•	•	•	•
Weight (lbs)	295	207	122	88	65	61	53	38	22	260	230	132	105	87
Size	Cabinet: 48" x 25½" x 16" Head: 23½" x 14" x 11"	Cabinet: 30" x 27" x 14" Head: 26½" x 11½" x 9¾"	Cabinet: 30" x 27" x 14" Head: 23½" x 11½" x 9¾"	Cabinet: 26½" x 23" x 11½"	26½" x 23" x 11"	24" x 22" x 11½"	25½" x 21" x 11"	20" x 18½" x 10¼"	18½" x 16" x 9½"	Cabinet: 42" x 24" x 15" Head: 23½" x 10" x 9"	Cabinet: 26½" x 24" x 46" Head: 26½" x 11½" x 9¾"	Cabinet: 40" x 29" x 12" Head: 23½" x 12" x 9½"	24" x 26" x 15¾"	24" x 21" x 14"

* Designated Response on Control Panel

Specifications subject to change without notice